

(12) **United States Patent**  
**Feldman**

(10) **Patent No.:** **US 10,410,024 B2**  
(45) **Date of Patent:** **\*Sep. 10, 2019**

(54) **AUTHENTICATION SYSTEMS AND METHODS**

- (71) Applicant: **ARK Ideaz, Inc.**, Pottstown, PA (US)
- (72) Inventor: **Randy Feldman**, Pottstown, PA (US)
- (73) Assignee: **Ark Ideaz, Inc.**, Pottstown, PA (US)
- (\* ) Notice: Subject to any disclaimer, the term of this patent is extended or adjusted under 35 U.S.C. 154(b) by 0 days.  
  
This patent is subject to a terminal disclaimer.

- (21) Appl. No.: **15/835,638**
- (22) Filed: **Dec. 8, 2017**

(65) **Prior Publication Data**  
US 2018/0107851 A1 Apr. 19, 2018

**Related U.S. Application Data**

- (63) Continuation of application No. 14/754,062, filed on Jun. 29, 2015, now Pat. No. 9,870,496, which is a (Continued)
- (51) **Int. Cl.**  
**G06K 7/10** (2006.01)  
**G01S 5/04** (2006.01)  
(Continued)
- (52) **U.S. Cl.**  
CPC ..... **G06K 7/10366** (2013.01); **G01S 5/04** (2013.01); **G06K 7/10346** (2013.01);  
(Continued)
- (58) **Field of Classification Search**  
CPC . G01S 5/04; G01S 5/12; G01S 13/756; G01S 13/878; G01S 3/74; G01S 13/82;  
(Continued)

(56) **References Cited**

U.S. PATENT DOCUMENTS

5,107,100 A 4/1992 Shephard et al.  
5,768,384 A \* 6/1998 Berson ..... G06Q 10/087  
705/50

(Continued)

FOREIGN PATENT DOCUMENTS

KR 10-2010-0070115 A 6/2010  
KR 10-2011-0055151 A 5/2011

(Continued)

OTHER PUBLICATIONS

International Search Report and Written Opinion dated Jan. 24, 2013 in counterpart International Application No. PCT/US2012/042142.

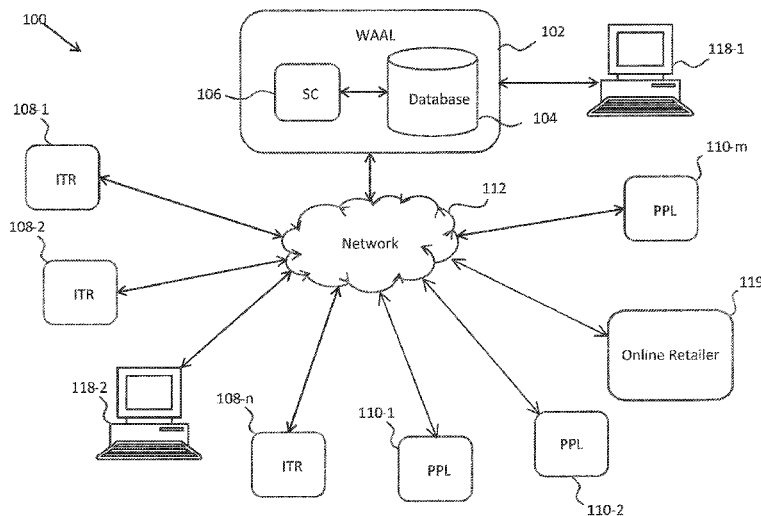
(Continued)

*Primary Examiner* — Fekadeselassie Girma  
(74) *Attorney, Agent, or Firm* — The Juhasz Law Firm

(57) **ABSTRACT**

A system includes a first computing device having a first non-transitory machine-readable storage medium, first communication circuitry, and at least one first processor in communication with the first non-transitory machine-readable storage medium and the first communication circuitry. The at least one first processor is configured to execute instructions stored in the first non-transitory machine-readable storage medium to cause the first communication circuitry to receive a first signal from a first transmission medium, calculate a first authentication value for an object based on data included in the first signal, and cause the first communication circuitry to transmit a second signal to the first transmission medium. The second signal identifies whether the object is authentic based, at least in part, on the first authentication value.

**61 Claims, 11 Drawing Sheets**



**Related U.S. Application Data**

- continuation of application No. 13/495,183, filed on Jun. 13, 2012, now Pat. No. 9,070,131.
- (60) Provisional application No. 61/496,772, filed on Jun. 14, 2011.
- (51) **Int. Cl.**  
**G06Q 30/00** (2012.01)  
**G08B 7/06** (2006.01)  
**G01S 13/87** (2006.01)
- (52) **U.S. Cl.**  
 CPC ..... **G06Q 30/0185** (2013.01); **G08B 7/06** (2013.01); **G01S 13/878** (2013.01)
- (58) **Field of Classification Search**  
 CPC ..... G01S 2013/468; G01S 2013/466; G06K 7/10079; G06K 7/10336; G06K 7/10346; G06K 7/0008; G06K 7/10099; G06K 7/10217; G06K 7/10475; G06K 7/10356; G06K 17/00; G06K 2017/0051; G08B 25/10; H04Q 2213/13095; H04B 7/0617; H01Q 25/00; H01Q 1/42; H01Q 3/36; H01Q 9/0407; H01Q 21/205; H01Q 3/30; H01Q 1/2216; H04L 63/1408; H04L 67/125; H04L 63/1441; H04W 12/08; A63H 30/04
- See application file for complete search history.

2007/0109124	A1	5/2007	Park et al.	
2007/0215685	A1	9/2007	Self et al.	
2007/0228166	A1	10/2007	Lui	
2007/0290793	A1	12/2007	Tran	
2008/0061935	A1*	3/2008	Melendez .....	H04B 5/02 340/10.1
2009/0021788	A1	1/2009	Hoffman et al.	
2009/0040022	A1*	2/2009	Finkenzeller .....	G06K 7/0008 340/10.1
2009/0212101	A1	8/2009	Tan	
2010/0201489	A1*	8/2010	Griffin .....	G06F 21/6245 340/10.1
2010/0217669	A1*	8/2010	Gazdzinski .....	G06Q 30/0251 705/14.52
2011/0082791	A1*	4/2011	Baghdasaryan .....	G06Q 20/10 705/44
2012/0047583	A1*	2/2012	Nyemahame ....	H04N 21/25816 726/26
2012/0319815	A1*	12/2012	Feldman .....	G06Q 30/0185 340/5.8
2014/0002238	A1*	1/2014	Taveau .....	G07C 9/00087 340/5.53
2016/0036807	A1*	2/2016	Knauss .....	G06F 16/9535 726/7
2016/0110613	A1*	4/2016	Ghanem .....	G06K 9/00778 382/103
2016/0174185	A1*	6/2016	Ramakrishnan ....	H04W 64/006 455/456.1
2016/0366342	A1*	12/2016	Vonolfen .....	G06T 7/20
2017/0053167	A1*	2/2017	Ren .....	G06K 9/00624

(56) **References Cited**

U.S. PATENT DOCUMENTS

6,130,623	A *	10/2000	MacLellan .....	H04B 7/24 340/10.1
6,332,572	B1*	12/2001	Yamamoto .....	B60R 25/2072 235/382
6,456,039	B1	9/2002	Lauper et al.	
7,207,488	B2	4/2007	Hammerslag et al.	
7,362,884	B2	4/2008	Willis et al.	
7,565,542	B2	7/2009	Silverbrook et al.	
7,571,856	B2	8/2009	Lo	
7,576,854	B2	8/2009	Wang et al.	
7,581,242	B1	8/2009	Oget et al.	
7,594,348	B2	9/2009	Oosterlinck	
7,619,819	B2	11/2009	Moon et al.	
7,645,884	B2	1/2010	Chauhan et al.	
7,647,193	B2	1/2010	Francis et al.	
7,659,816	B2	2/2010	Wandel	
7,659,851	B2	2/2010	DeJean et al.	
7,730,797	B1	6/2010	Deolalikar et al.	
7,756,248	B2	7/2010	Beckers et al.	
7,757,948	B2	7/2010	Whewall et al.	
7,763,469	B2	7/2010	Babichenko et al.	
7,775,056	B2	8/2010	Lowenstein	
7,784,681	B2	8/2010	Silverbrook et al.	
7,784,688	B2	8/2010	Wang	
7,864,424	B2	1/2011	Stuck et al.	
7,874,489	B2	1/2011	Mercolino	
7,875,457	B2	1/2011	Wang et al.	
7,878,398	B2	2/2011	Chen et al.	
8,010,157	B1*	8/2011	Fujisaki .....	H04M 1/575 455/556.1
8,417,233	B2	4/2013	Woloshyn	
2002/0124169	A1*	9/2002	Agrawal .....	G06Q 20/3674 713/168
2002/0169539	A1*	11/2002	Menard .....	G01C 21/26 701/532
2005/0119979	A1*	6/2005	Murashita .....	G06K 7/0004 705/67
2006/0166643	A1*	7/2006	Puthenpura .....	H04L 12/2854 455/406
2006/0291657	A1*	12/2006	Benson .....	G05B 13/0275 380/270

FOREIGN PATENT DOCUMENTS

WO	2008059191	A1	5/2008
WO	136116	A1	10/2012

OTHER PUBLICATIONS

Anti-Counterfeit Packaging Technologies, A strategic need for the Indian Industry, Rajiv Dhar, Confederation of Indian Industry, 2009, 56 pages.

Securing RFID-supported Supply Chains, Kerschbaum and Aigner, 2010, 10 pages.

Smart Container Chain Management, Seventh Framework Programme, P. Wolters and M. Vayou, May 18, 2010 [Dissemination Level (CO)], 42 pages.

New ISO RFID standard, Feb. 12, 2010, available at <https://www.iso.org/news/2010/02/Ref1293.html>, 2 pages.

How can technology help to fight counterfeits?, Jean-Marc Bebee, available at [https://www.wipo.it/wipo\\_magazine/en/2009/05/article\\_0011.html](https://www.wipo.it/wipo_magazine/en/2009/05/article_0011.html), Sep. 2009, 5 pages.

How New Packaging Technologies are Helping in the Struggle Against Counterfeit Drugs, Richard Burhouse, available at <https://www.pharmamanufacturing.com/articles/2010/119/?show=all>, Aug. 23, 2010, 5 pages.

Efficient RFID authentication scheme for supply chain applications, 2010 IEEE/IFIP Int'l Conference on Embedded and Ubiquitous Computing, Fei Be and Yi Mu, University of Wollongong, Australia, 2010, 8 pages.

Combating Counterfeit Drugs, A Report of the Food and Drug Administration, US Food and Drug Admin., Feb. 2004, 37 pages.

MIL-STD-129R, Military Marking for Shipment and Storage, Department of Defense Standard Practice (US), Feb. 14, 2014, 165 pages.

Department of Defense Instruction No. 8320.04, available at <http://www.acq.osd.mil/dpap/dars/dfars/html/current/tochtml.htm>, Jun. 16, 2008, 11 pages.

Item Unique Identification (IUID), The Basics, guidelines from the Department of Defense, May 2010, 22 pages.

Press release, Zebra Technologies, "Zebra Technologies Welcomes FDA Stand on High-Tech Weapons to Combat Counterfeit Drugs," Oct. 15, 2003, 3 pages.

Internet article, "Using track and trace technologies to combat counterfeit drugs and gain efficiencies in the supply chain," published by unknown source, at <https://social.eyeforpharma.com/>

(56)

**References Cited**

OTHER PUBLICATIONS

uncategorised/using-track-and-trace-technologies-combat-counterfeit-drugs-and-gain-efficiencies, Aug. 10, 2004, 3 pages.

Zebra white paper, "Patient Safety Applications of Barcode and RFID Technologies," 2013, 16 pages.

Undated Zebra Press Release, "Zebra Technologies Introduces First-of-Its-Kind Brand-Protection Solutions: Defense Against \$720 Billion Brand Fraud Issue," 2 pages.

\* cited by examiner

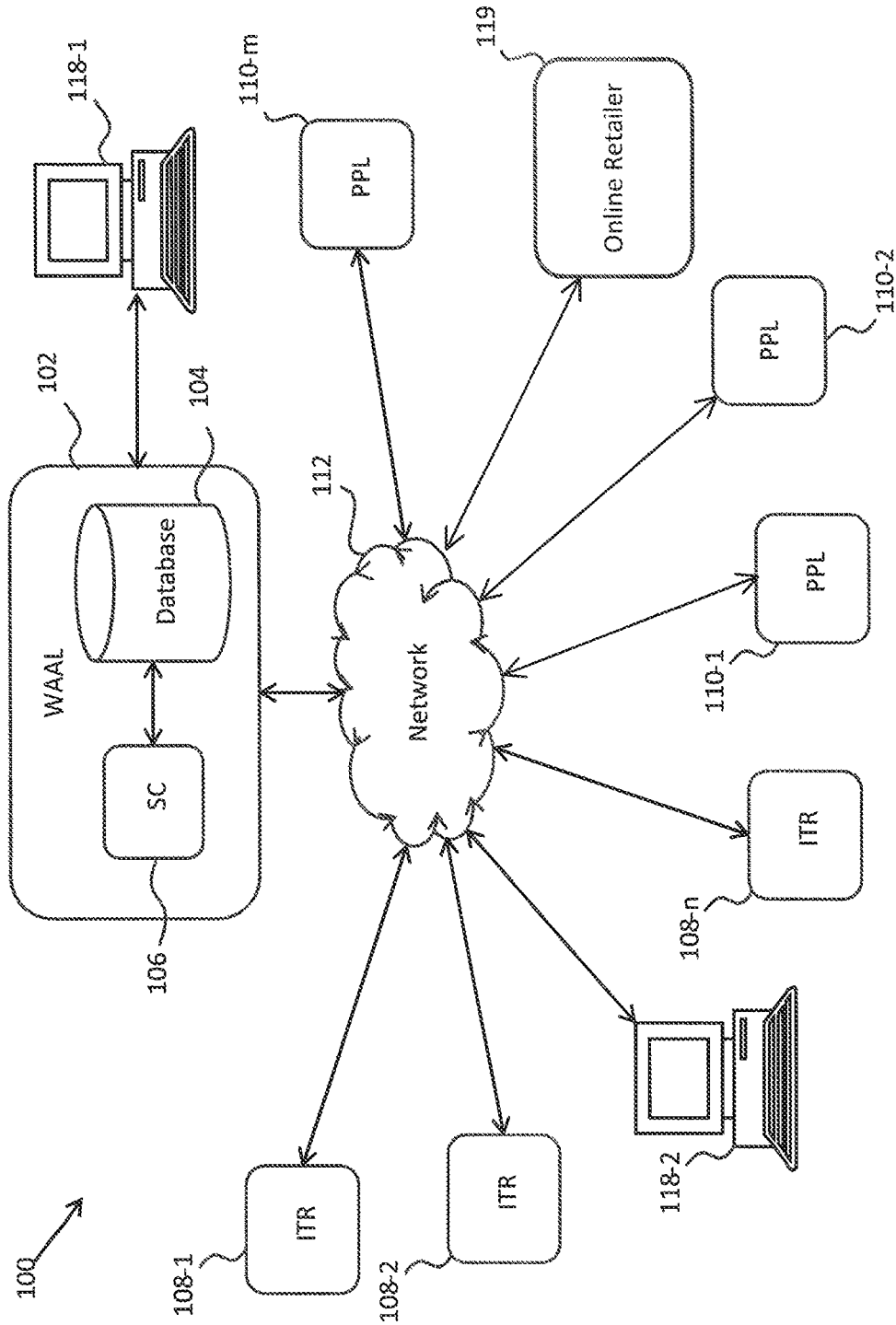


FIG. 1

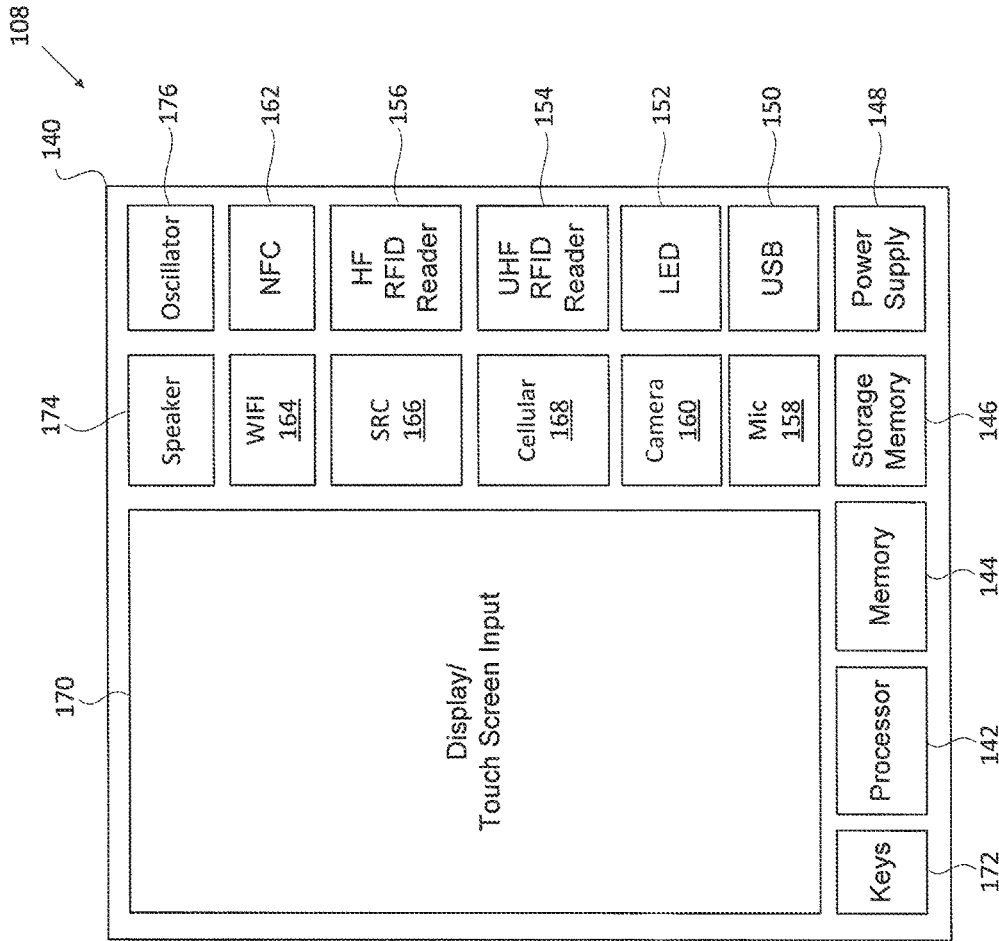


FIG. 2B

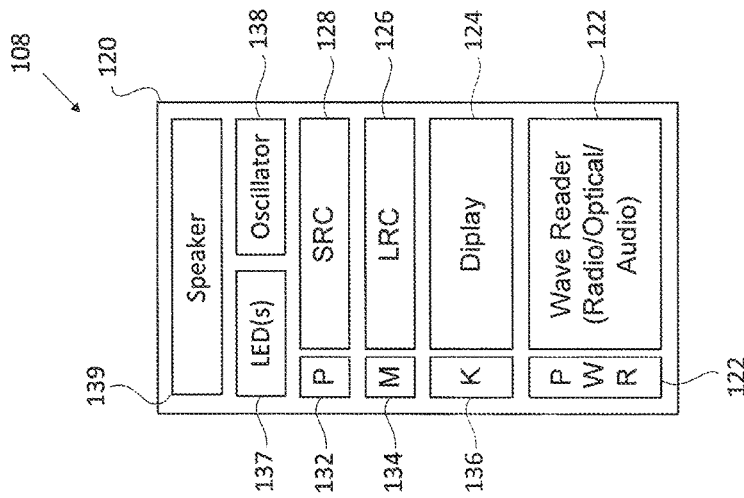


FIG. 2A

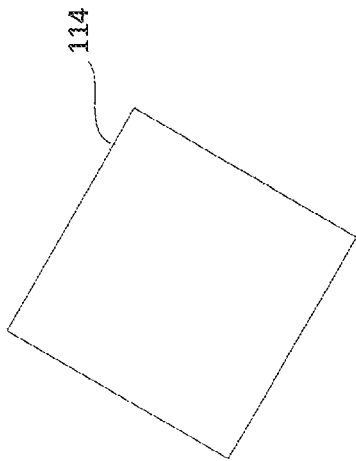


FIG. 3A

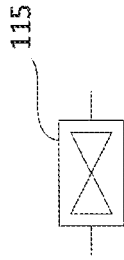


FIG. 3B

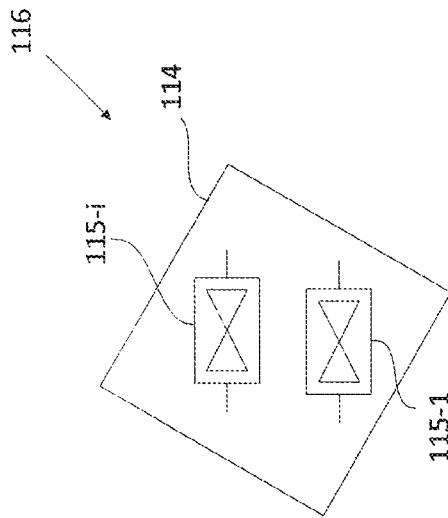


FIG. 3C

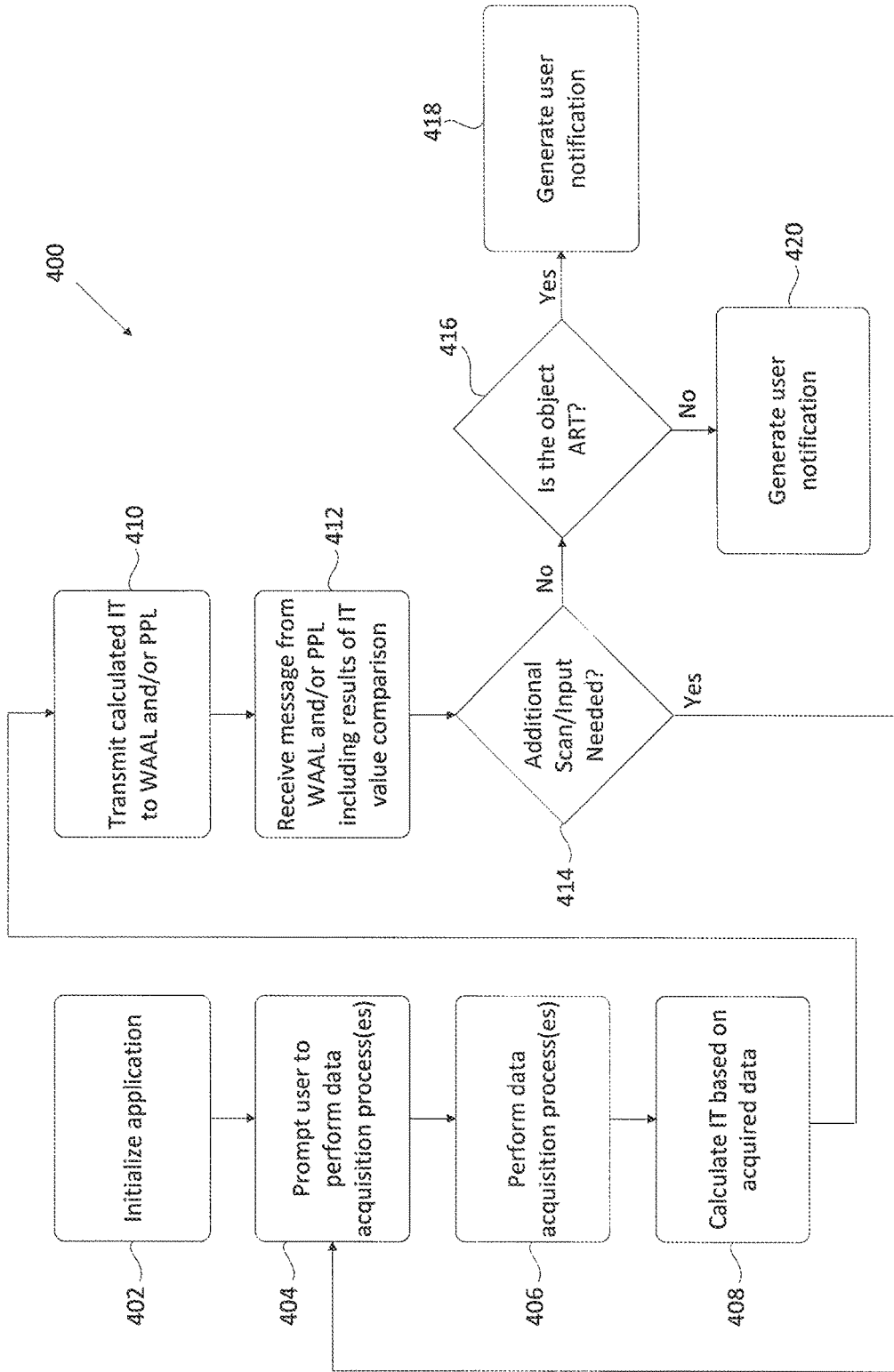


FIG. 4A

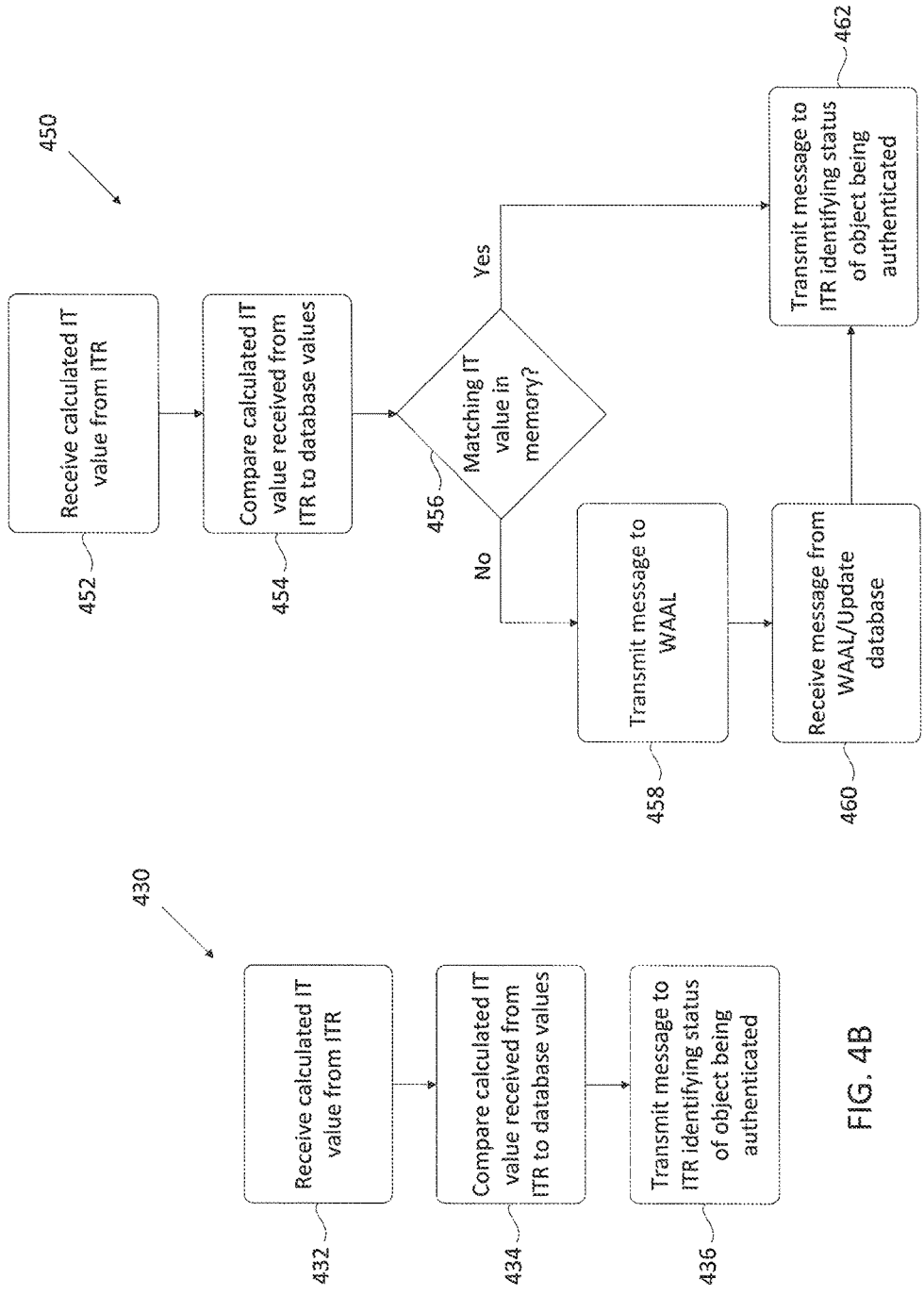


FIG. 4C

FIG. 4B



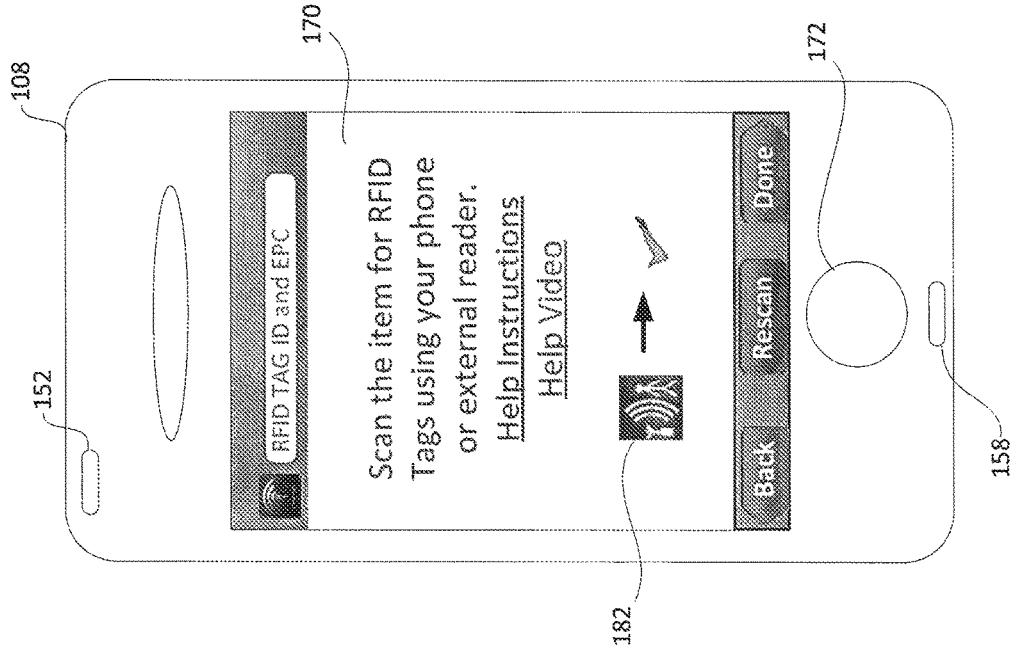


FIG. 5B

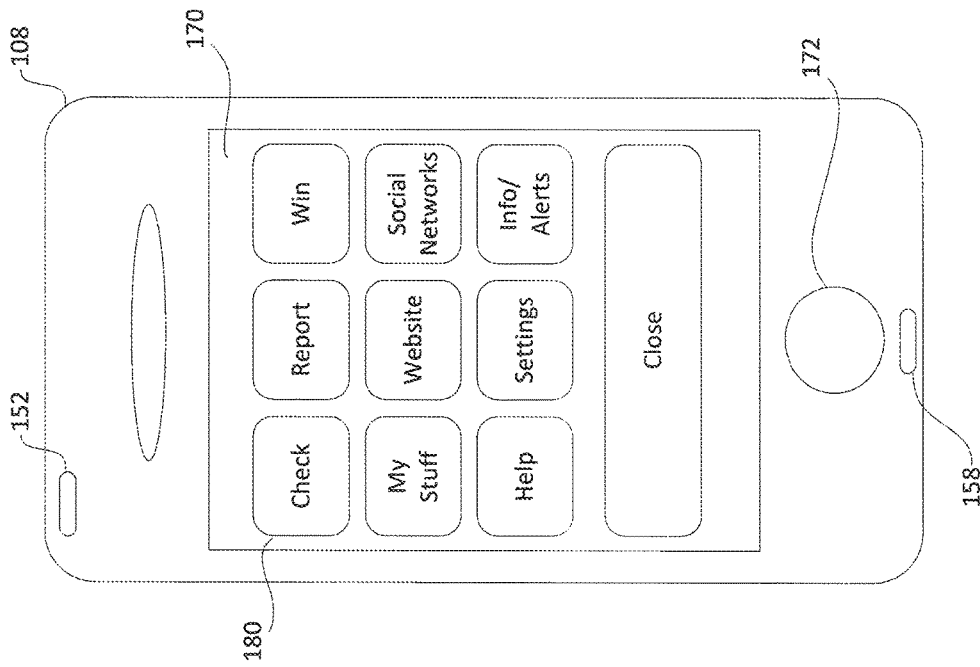


FIG. 5A

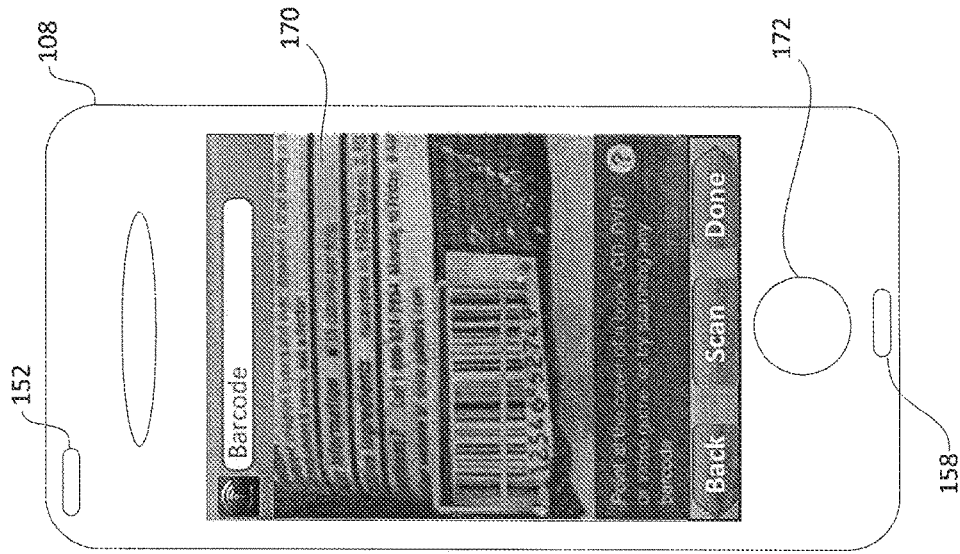


FIG. 5D

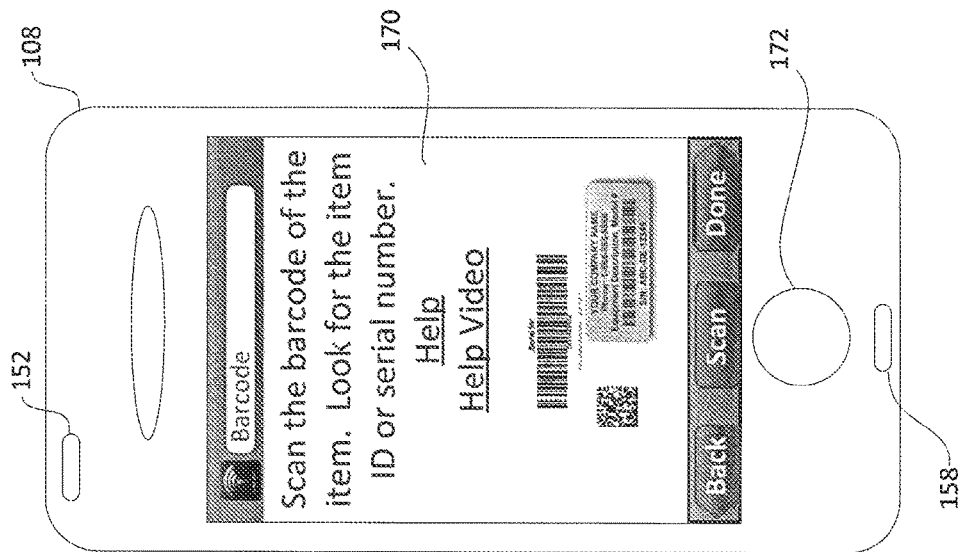


FIG. 5C

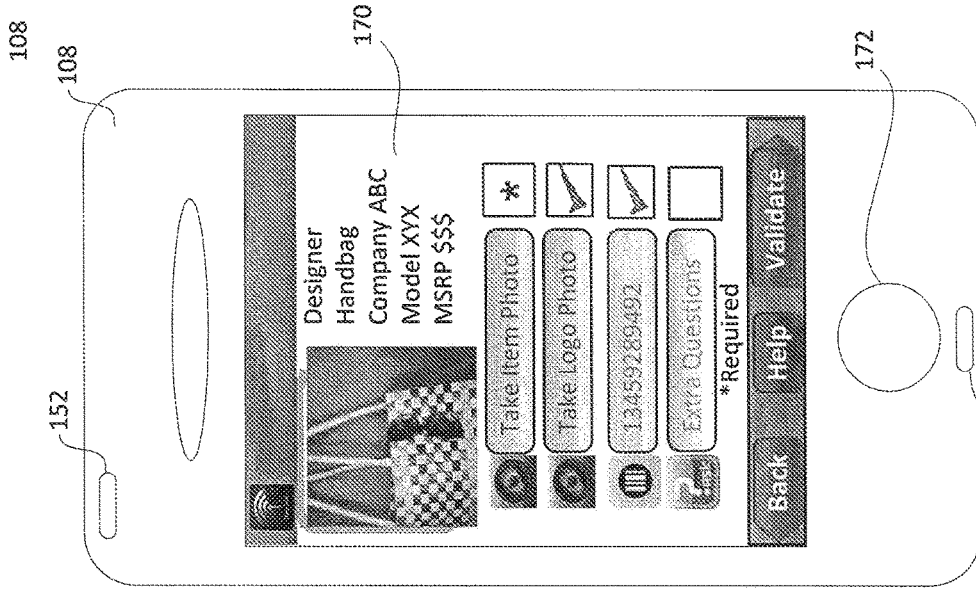


FIG. 5F

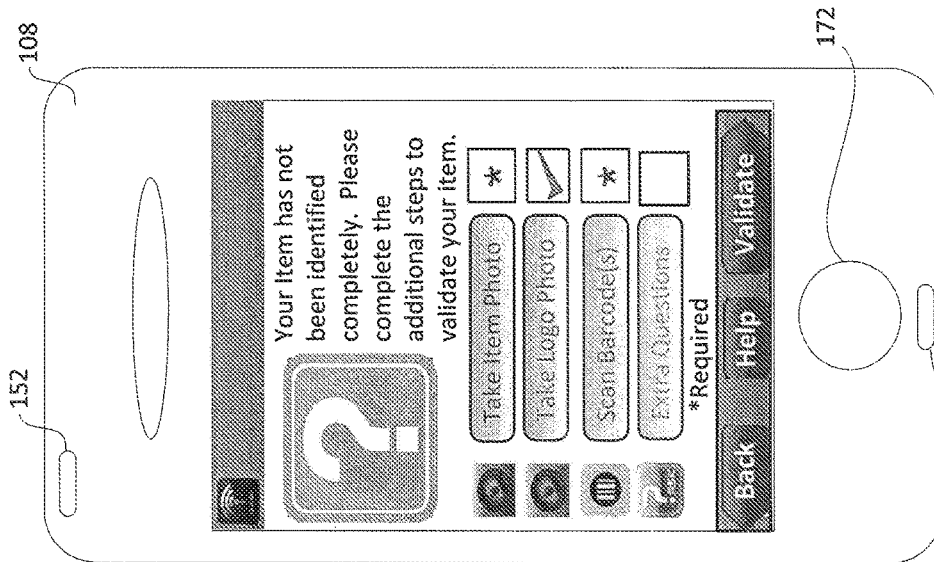


FIG. 5E

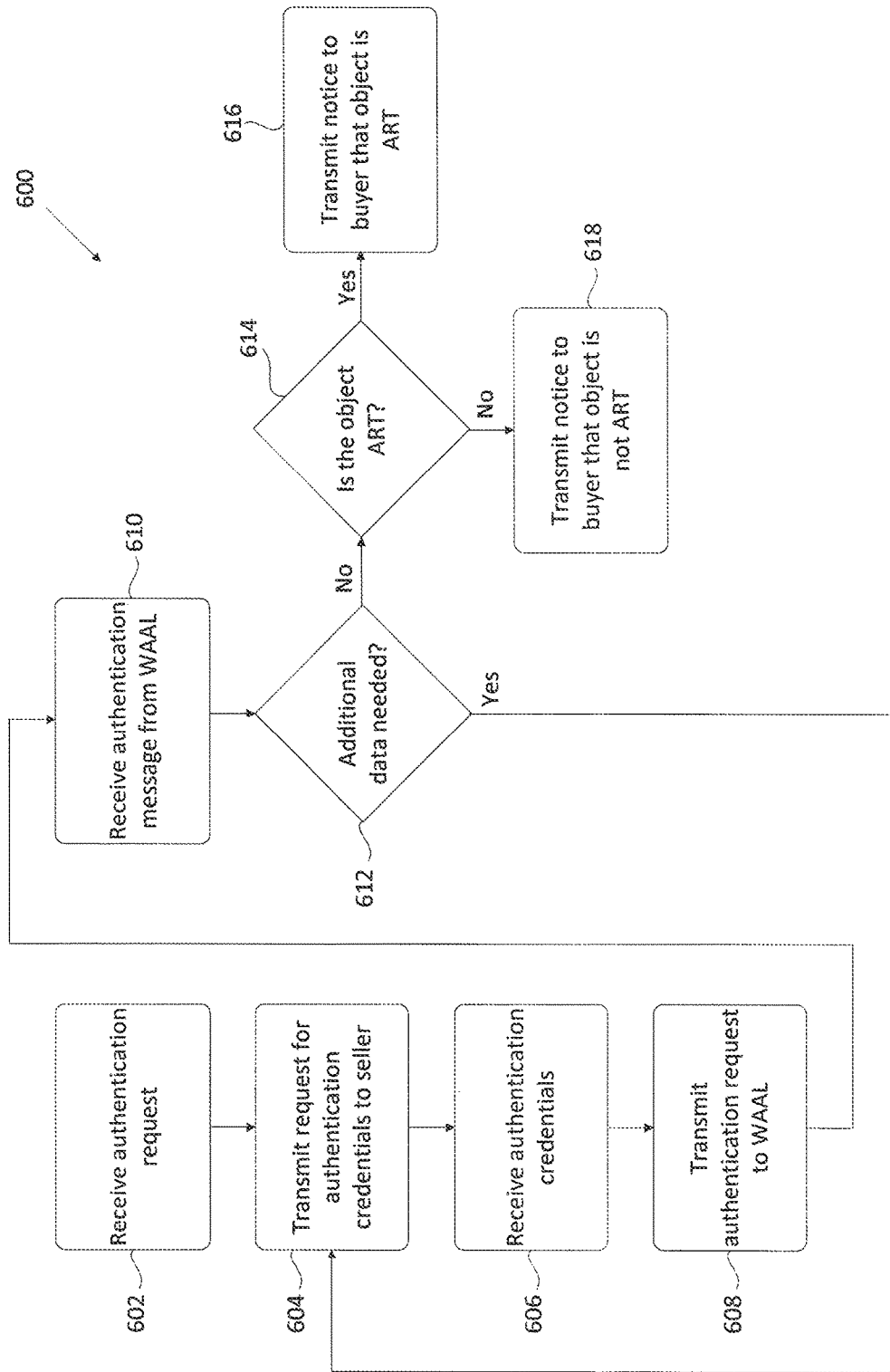


FIG. 6A

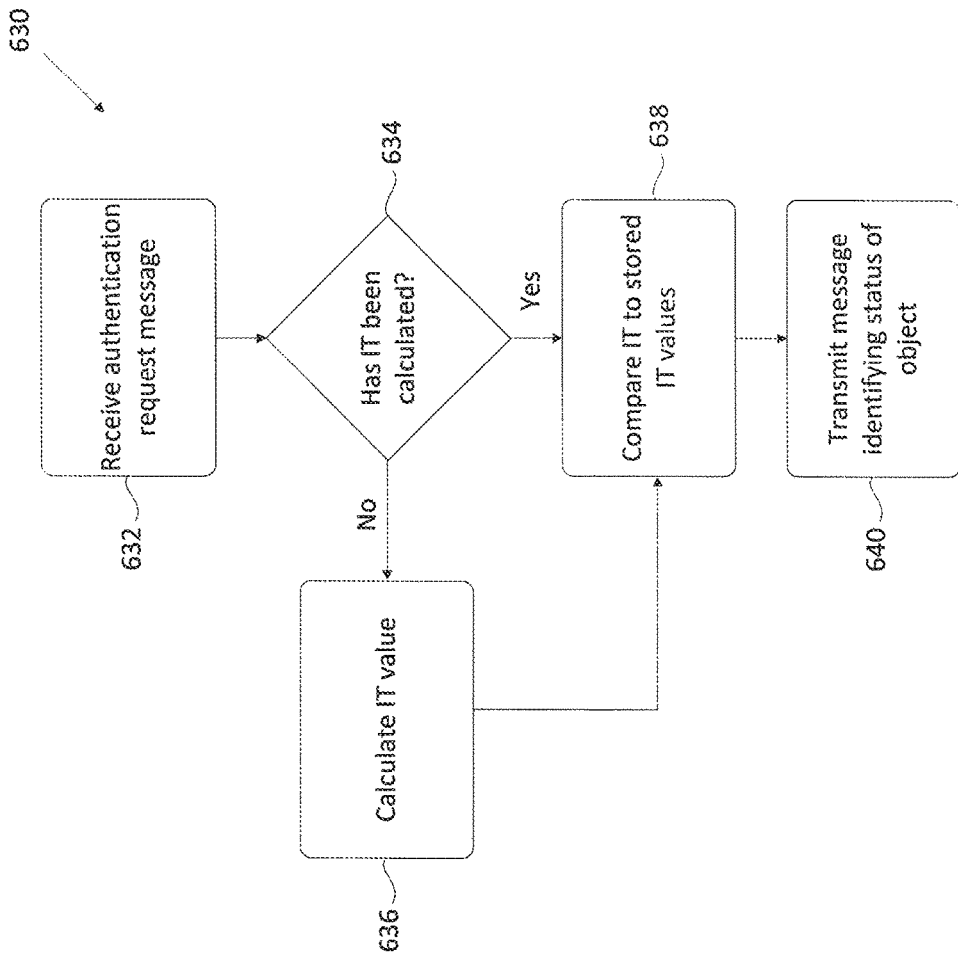


FIG. 6B

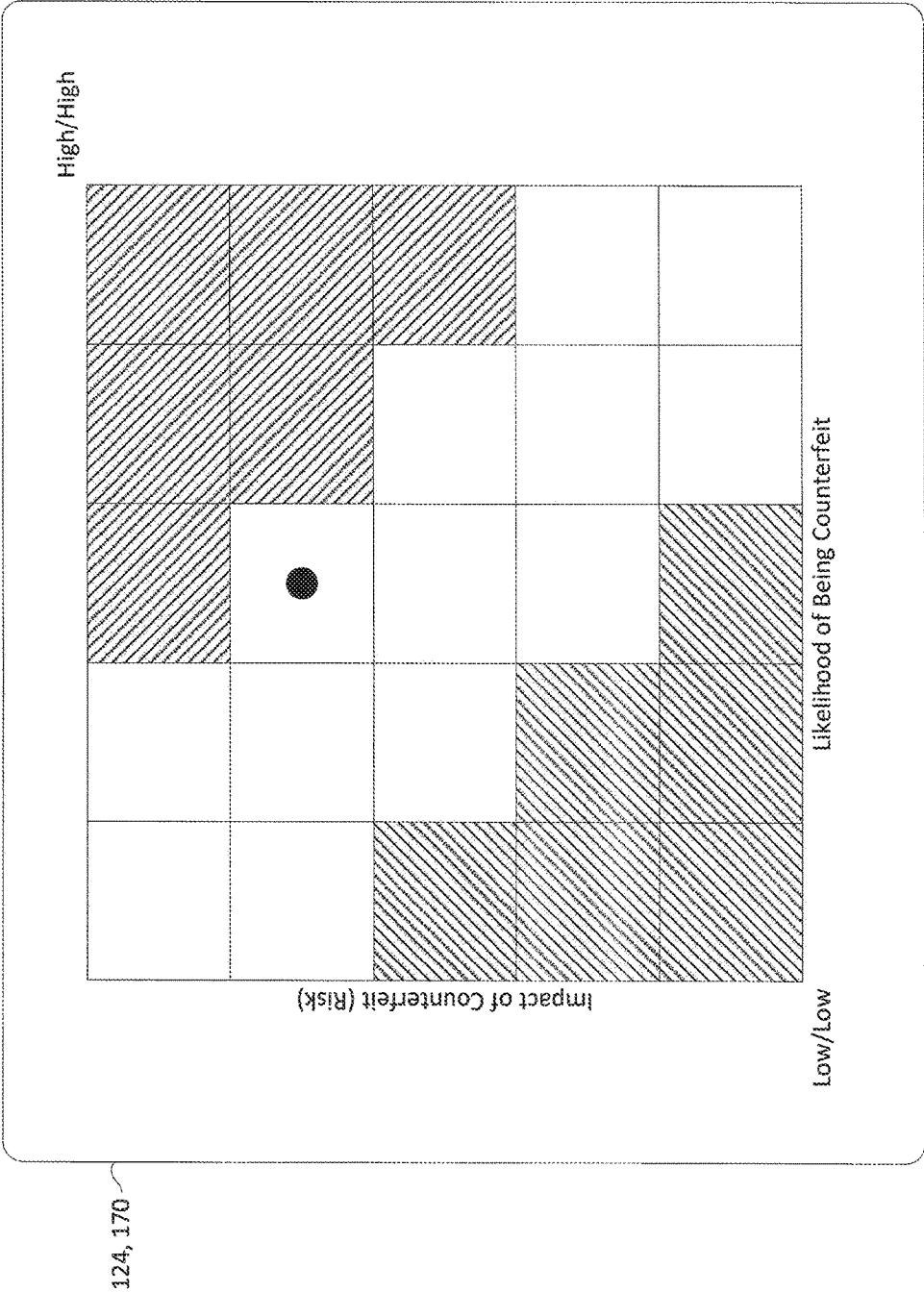


FIG. 7

## AUTHENTICATION SYSTEMS AND METHODS

### CROSS-REFERENCE TO RELATED APPLICATIONS

This application is a continuation of U.S. patent application Ser. No. 14/754,062, filed Jun. 29, 2015, which is a continuation of U.S. patent application Ser. No. 13/495,183, filed on Jun. 13, 2012 (now U.S. Pat. No. 9,070,131), which claims priority to U.S. Provisional Patent Application No. 61/496,772 filed on Jun. 14, 2011, the entirety of which is herein incorporated by reference.

### FIELD OF DISCLOSURE

The disclosed systems and methods relate to authentication. More particularly, the disclosed systems and methods relate to the authentication of objects using various parameter value sensors for discerning attributes of an object, and a data processing system and associated data storage, for comparing sensed parameters to stored criteria that are associated with authenticity.

### BACKGROUND

Counterfeit goods are damaging to the owners of name brand products as well as damaging to unknowing purchasers of such goods. For example, brand name owners or manufacturers suffer as they lose out on revenue from the sale of counterfeit goods and such goods can also damage the reputation of the brand name owner if the goods are shoddily made. Consumers can be damaged by unknowingly over-paying for counterfeit goods that they believe are authentic.

### SUMMARY

In some embodiments, a system includes a machine-readable storage medium, a processor in communication with the machine-readable storage medium, communication circuitry in communication with the processor; and a plurality of sensors in communication with the processor. Each of the plurality of sensors is configured to generate an electrical signal in response to receiving wave energy. The processor is configured to control data acquisition for authenticating an object using at least a subset of the plurality of sensors, calculate an authentication value based on signals received from the subset of the plurality of sensors, and cause the communication circuitry to transmit an authentication request including the authentication value to an authentication entity.

In some embodiments, an authentication method includes performing a plurality of data acquisition processes on an object using sensors configured to generate electrical signals in response to receiving wave energy, calculating an authentication value based on signals received from at least a subset of the sensors, and transmitting an authentication request including the authentication value to an authentication entity.

In some embodiments, a machine readable storage medium is encoded with program code, wherein when the program code is executed by a processor, the processor performs a method. The method includes performing a plurality of data acquisition processes on an object using sensors configured to generate electrical signals in response to receiving wave energy, calculating an authentication

value based on signals received from at least a subset of the sensors, and transmitting an authentication request including the authentication value to an authentication entity.

### BRIEF DESCRIPTION OF THE DRAWINGS

FIG. 1 is a block diagram of one example of an authentication system in accordance with some embodiments.

FIGS. 2A and 2B are block diagrams of examples of immutable token readers in accordance with some embodiments.

FIG. 3A illustrates one example of a diagram key of an Authentic Real Thing in accordance with some embodiments.

FIG. 3B illustrates one example of a diagram key of an Added Indelible Marker in accordance with some embodiments.

FIG. 3C illustrates one example of a diagram key of an Authentic Real Thing including an Added Indelible Marker in accordance with some embodiments.

FIGS. 4A-4C are flow diagrams of examples of methods of authenticating an object in accordance with some embodiments.

FIGS. 5A-5F illustrate examples of screen shots of an immutable token reader during a authentication process in accordance with some embodiments.

FIGS. 6A-6B are flow diagrams of examples of methods of authenticating an object in accordance with some embodiments.

FIG. 7 illustrates one example of a graphic displayed to a user identifying risk associated with a large assembly.

### DETAILED DESCRIPTION

This description of the exemplary embodiments is intended to be read in connection with the accompanying drawings, which are to be considered part of the entire written description.

The disclosed systems and methods advantageously provide the ability to authenticate objects, referred to herein as authentic real things (“ART”), using mobile and stationary devices. The number and type of objects that can be authenticated are not limited, and examples of such objects include, but are not limited to, apparel, footwear, fashion accessories, consumer electronics, consumer appliances, collectibles (dolls, sport paraphernalia, etc.), pharmaceuticals, medical devices, and large assemblies like cars, trucks, and planes to list but only a few possibilities.

FIG. 1 illustrates one example of a World-Wide Validation Network (“WWVN”) 100 in accordance with some embodiments. WWVN 100 includes one or more World-Wide ART & Artifact Libraries (“WAALs”) 102 that include a database 104 and a System Curator (“SC”) 106, which may be implemented in one or more processors or central processing units (“CPU”) as will be understood by one of ordinary skill in the art. The one or more WAALs 102 are in communication with one or more Immutable Token Readers (“ITRs”) 108-1, 108-2, . . . , 108-*n* (collectively “ITRs 108”) and with one or more Public and Private Libraries (“PPLs”) 110-1, 110-2, . . . , 110-*m* (collectively “PPLs 110”) via network 112.

In some embodiments, WAAL(s) 102 are implemented using one or more computers or servers on which database 104 and SC 106 are implemented. Database 104 can be implemented as a relational database that stores data of ART 114 that are used to define True Artifacts (“TAs”) 116 that are described in greater detail below. Version history, infor-

mation, lineage, and other details about an ART **114** and TA **116** for validation and tracking are also stored in database **104**.

SC **106** includes one or more processors and software and/or program(s) configured to manage the communication, indexing, activities and functions of the WAAL **102**. Examples of such functions include, but are not limited to, authentication calculations, registration and record management of TAs and their respective digital fingerprints, communications with ITRs **108** and PPLs **110**, and generating reports and analytics to users of local terminals **118-1** or remote terminals **118-2**. In some embodiments, SC **106** provides an application programming interface (“API”) for WAAL **102**. The API provides for access and bulk processing of a large number of requests from ITRs **108** and PPLs **110**. Online retailers, such as online retailer **119**, can access database **104** and have WAAL **102** authenticate goods via network **114** by communicating with WAAL **102** via the API.

SC **106** is configured to perform analytics on data stored in database **104** and/or on data received from ITRs **108** and/or PPLs **110** via network **112**. Such analytics involve determining whether attributes or combinations of attributes of objects, which attributes have been sensed or reported, qualify the objects as authentic real things (ART) or as true artifacts (TA). In addition to comparing sensed or reported attributes versus stored values that definitively distinguish objects (such as a unique identifying code), the analytics can involve plural attributes and can be implemented using one or more techniques including, but not limited to, pattern matching, artificial intelligence, optical recognition, key marking, fuzzy logic, chaos theory, entropic intelligence networks, Bayesian network(s), and quantum physics.

As described in greater detail below, data received at WAAL **102** and analyzed by SC **106** can be derived from an interrogation of one or more added indelible markers (“AIMs”) such as, for example, radio frequency identification (“RFID”) tag(s), product serial number(s), transponder identification numbers, doping agents, barcodes, quick response (“QR”) codes, invisible ink(s), software keys, certificates of authenticity codes, colors, sounds, and combinations thereof by ITRs **108**. Such data is combined to provide a unique identification for the ART referred to herein as an Immutable Token (“IT”) of the ART. In some embodiments, SC **106** performs weighting of AIMs of an ART to calculate the IT.

In some embodiments, the weighting of AIMs is based on the likelihood that the AIMs can be forged or counterfeited. For example, the physical appearance of an article of manufacture, e.g., a shirt, bag, pair of shoes, etc., can be somewhat easily copied or replicated whereas an RFID tag number and a manufacturer serial number are less likely to match an authentic RFID tag number and manufacturer serial number affixed to an object during manufacture. Consequently, the RFID tag number and manufacturer serial number can be more heavily weighted than the physical appearance of an object. As will be understood by one of ordinary skill in the art, taking all available AIM values into account increases the certainty that an object is authentic.

Additionally, the physical appearance of authentic goods may vary due to the manufacturing process and the use of multiple AIMs also reduces the likelihood that an authentic item is falsely identified as being counterfeit. For example, colors and the location of certain features of articles of manufacture may vary due to slight variances in dyes used to create cloth for a shirt or the exact position of buttons and logos that are affixed by hand to a garment. Weighting such

AIM values less than AIM values that provide a higher degree of certainty reduces the likelihood of a false negative authentication.

Data stored in WAAL **102** is amassed over time progressively improving the probability that calculations performed by WAAL **102** are accurate in determining or disproving the authenticity of an object, i.e., to determine accurately whether or not the object is an ART **114**. WAAL **102** is configured to perform token (e.g., IT) management and provide real-time communication with ITRs **108** and PPLs **110**, including validation and verification of the authenticity of an object, i.e., ART.

In some embodiments, WAAL **102** is configured to store attributes of known facsimile or counterfeit goods to improve the ability of WAAL **102** to identify fraudulent or counterfeit goods. For example, counterfeit goods may include differences in the physical appearance of the good that are known to a manufacturer or producer of the goods, but are not well-known by a prospective buyer. In some embodiments, these known physical differences are stored in WAAL **102** and used to identify an object as counterfeit.

For example, known counterfeit goods may include a tag in a location that is offset from the location in which the same or similar tag of an authentic item is to be located or the known counterfeit good may include differences in a collar or in the number of buttons. The attributes of known counterfeit goods are stored by the WAAL **102** and can be used during an authentication process by analyzing an image collected by an ITR to assess whether the object being authenticated is in fact authentic or counterfeit. In this manner, the knowledge base of the WAAL **102** is increased over a period of time as data on known counterfeit goods (and authentic goods) are collected and stored in WAAL **102**.

ITRs **108** includes devices configured to read, interrogate, and interpret one or more AIMs **118**, which are described in greater detail below, using one or more sensors configured to generate electrical signals in response to wave energy. Examples of such wave sensors includes receivers for receiving audio sounds, a camera or light-sensitive sensor for performing optical measurements, and magnetic-sensitive sensors, to list but only a few possibilities.

In some embodiments, ITRs **108** are implemented in a mobile form factor such as, for example, a fob, a smartphone, portable music player, tablet computer, laptop computer, personal digital assistant (“PDA”), or other portable electronic device with capacity for wireless data communication or at least intermittent coupling into a data network. In some embodiments, ITRs **108** are implemented in more stationary devices such as a desktop computer, kiosk, and/or point-of-sale terminals.

As illustrated in FIG. 2A, ITR **108** is illustrated as a mobile module **120** configured to communicate with other mobile devices, such as mobile unit **140** illustrated in FIG. 2B, and/or other stationary devices such as a computer. ITR module **120** includes a wave reader **122** that is a multi-function sensor array configured to sense radio, optical, magnetic, audio, and other wave energy. Wave reader **122** is configured to receive waves emitted from an object such that a radio-audio-optical-electronic (“Raotronic”) fingerprint of the object can be calculated as described in greater detail below.

In some embodiments, ITR module **120** includes a display **124** configured to display images and text to a user. In some embodiments, display **124** is a touch screen display configured to display virtual icons or keys through which a user may input data. In some embodiments, module **120** is a fob



without a display **124**, but that includes other circuitry and features illustrated in FIG. **2A**.

A long-range and/or cellular communication chip (“LRC”) or circuitry **126** provides module **120** with the ability to communicate via a cellular network and/or a WIFI network. A cellular chip enables module **120** to communicate with WAAL **102** and/or PPLs **110** via a wireless communication protocol such as, for example, CDMA, GSM, 3G, and 4G LTE, to list but only a few possibilities. As described in greater detail below, ITR module **120** (and more generally ITRs **108**) exchange calculated IT data values, user profile data, reports, advertising, and/or other data with WAALs **102** and/or with PPLs **110** via network **112**, which may be accessed via the Internet, a cellular network, and/or other network.

In embodiments in which LRC **126** includes a WIFI adapter, LRC **126** is configured to be placed into a promiscuous mode such that one or more AIMS can be interrogated. One example of this is that LRC **126** is configured to read the media access control (“MAC”) or burned in/permanent address of a network card present in another device (e.g., a computer). As will be understood by one skilled in the art, a MAC address of a network card is a unique, non-duplicated code set by the manufacturer, equivalent in discussion to the fact that all transponding devices produced in accordance to internal agreement of manufacturers are unique.

In some embodiments, modules **120** also includes a short range communication chip (“SRC”) **128** such as, for example, a Bluetooth, Near-Field Communication (“NFC”), or other chip that enables module **120** to pair with (e.g., communicate data bidirectionally with) other devices. Although communication chips **126** and **128** are depicted as separate components, one of ordinary skill in the art will understand that chips **126** and **128** may be implemented in a single package. In some embodiments, SRC chip **128** can be placed in a promiscuous mode in which SRC chip **128** performs data gathering.

A power supply **130**, such as a rechargeable or replaceable battery, is configured to provide power to each of the active devices of module **120**. In addition to the active devices described above, module **120** also includes one or more processors or CPUs **132**. Processor (s) is configured to execute an ART & Artifact Validation Program (“AAVP”). The AAVP provides the instructions for module **120** to interrogate an object and calculate IT values to assess the authenticity of the object. When executing the AAVP, processor(s) **132** may cause display **124** to display information about the object(s) in question to a user. Examples of such information includes, but is not limited to, history, status, and/or location of the object.

Module **120** also includes a memory **134** such as a random access memory (“RAM”) and/or a read only memory (“ROM”). Memory **134** is a non-transitory machine readable storage medium configured to store the instructions for executing the AAVP. Memory **134** is also configured to store data obtained by module **120** from wave reader **122** and communication chips **126** and **128**. One or more keys **136** or other user input device can also be included in module **120**.

In some embodiments, module **120** includes means for conveying signals and notifications to a user beyond a display. For example, module **120** includes one or more light emitting diode(s) (“LED(s)”) **137** are configured to emit one or more colors of light based on an authentication response as described in greater detail below. An oscillator **138** is configured to vibrate or generate a tactile notification, and a speaker **139** is configured to generate an audible notification to a user. In some embodiments, the notifications emitted by

one or more of LEDs **137**, oscillator **138**, and speaker **139** are to notify a user as to whether an object has been authenticated as described in greater detail below.

ITR module **120** can communicate with a mobile device **140** using a wireless, wired, or other communication channel. As shown in FIG. **2B**, mobile device **140** includes one or more processors **142** in signal communication with a persistent memory **144** and a more volatile memory **146**. In some embodiments, memory **144** is configured to store the AAVP, and memory **146** is configured to store data acquired by mobile device **140**. A power supply **148** is configured to provide power for mobile device **140**, including power to processor(s) **142**. Power supply can be a replaceable and/or rechargeable battery as will be understood by one of ordinary skill in the art.

In some embodiments, mobile device **140** includes an attachment port **150**, such as a universal serial bus (“USB”) interface or a secure digital (“SD”) card slot, for transmitting and receiving data via a wired or otherwise mechanical connection (e.g., slot and card).

One or more LED **152** are provided for displaying status signals to a user. In some embodiments, LEDs **152** are used to make visible all or part of an ART. The use and control of LEDs **152**, or other illuminating device that produces waves in the visible or ultraviolet range, can be used to expose AIM or other characteristics of ART.

Mobile device **140** includes one or more sensor devices that comprise a wave reader. For example, mobile device **140** includes an ultra-high frequency (“UHF”) radio frequency identification (“RFID”) reader **154**, a high-frequency RFID reader **156**, a microphone **158**, and a camera **160**. Although shown as separate devices, one of ordinary skill in the art will understand that RFID readers **154** and **156** can be implemented as a single device in some embodiments and are configured to interrogate RFID tags that may be embedded or coupled to objects as described in greater detail below.

Microphone **158** and camera **160** are configured to receive audio signals (waves) and light signals (waves), respectively, and generate and/or output electrical signals in response. Camera **160** can be a digital camera that includes photosensitive electronics, such as charge-coupled devices (“CCD”) or complementary metal-oxide-semiconductor (“CMOS”) image sensors. The sensor array of camera **160** is covered with a patterned color filter mosaic having red, green, and blue regions in the Bayer filter arrangement such that each sensor element can record the intensity of a single primary color of light. Camera **160** interpolates the color information of neighboring sensor elements, through a process called demosaicing to create a final image.

Camera **160** is configured to receive information across a broad spectrum of visible and invisible wavelengths and to detect small objects (e.g. objects on a scale of a few millimeters down to micrometer or microscopic in size). In some embodiments, camera **160** is configured to enable device **140** to perform macro examination of larger images and/or to support dimensional analysis, the collection of pattern information and other “visible” data to analyze ART. Other physical characteristics like size, weight, range of movement, special movement, mass, scale and others may be calculated or measured with camera **160**. Camera **160** may also collect a range of observations or observable points to calculate pattern or patterns for use in validation and authentication.

In some embodiments, camera **160** is used in connection with LEDs **152** or other illuminating device that produces waves in the visible or ultraviolet range. For example, the

one or more LEDs **152** are controlled by processor **142** to emit specific wavelength or color combinations to expose patterns specifically sensitive, or that become “visible” to either the device, human or other sensor when exposed to the special light range produced by the LEDs **152** (the classic “invisible ink” technique is a metaphoric example, whereby the writing on an object is only exposed to a certain wavelength of light shined on it. Then the observer can collect the information and provide it to the AAVP). Camera **160** is used to record the resulting image.

Mobile device **140** also includes one or more units for providing communications with other devices. For example, mobile device **140** includes an NFC chip **162**, a WIFI or other wireless networking chip **164**, a short-range (e.g., a Bluetooth) chip **166**, and a cellular chip **168**. Communication chips or units **162**, **164**, **166**, and **168** may be separate units or combined into a single package.

Display **170** can be a touchscreen display configured to display information to a user in the form graphics and text. Examples of such information includes, but is not limited to, history, status, and/or location of an object being interrogated for authenticity. One or more keys **172** or other user input device can also be included in mobile device **140** such that a user can input data and control device **140**.

In some embodiments, mobile device **140** also includes a speaker **174** and an oscillator **176**. LEDs **152**, speaker **174**, and oscillator **176** are configured to provide notifications to a user. For example, LEDs **152** and display **170** may generate a visual notification to a user, speaker **174** is configured to generate an audible notification to a user, and oscillator **176** is configured to generate a tactile notification to a user.

One of ordinary skill in the art will understand that more stationary devices, such as computers, kiosks, and point-of-sale or checkout devices or registers, to list but only a few possibilities, can be configured as an ITR **108** and include some or all of the features described above with respect to module **120** and mobile device **140**.

PPLs **110** can be public or private libraries of ART. For example, a company or manufacturer of goods can develop its own library or database of the signatures of the products the company sells or produces. In some embodiments, PPLs **110** are implemented in one or more servers that are in signal communication with WAAL **102** and one or more ITRs **108** via network **112**. PPLs **110** store AIMs as embedded codes in digital media, software or electronic medium. At some level AIMs are associated to ART in a database residing in PPLs **110**.

As mentioned above, ITRs **108** are configured to interrogate objects to determine their authenticity. FIG. 3A illustrates one example of a diagram key of ART **114**. ART **114** is used to describe a physical object that is authentic.

FIG. 3B illustrates one example of a diagram key of an AIM **115**. In some embodiments, AIMs **115** are applied to ART **114** during the manufacturing process by a manufacturer. Examples of AIMs **115** include, but are not limited to, RFID tags, product serial numbers, transponder identification numbers, doping agents, barcodes, invisible ink(s), software keys, certificates of authenticity codes, and combinations thereof.

In some embodiments, one or more AIMs **115** include tamper-proof RFID (electric or magnetic field sensitive) tags. As will be understood by one of ordinary skill in the art, such tamper-resistant tags include trip mechanisms, which are sewn or otherwise permanently or semi-permanently

affixed to an object. In some embodiments, the tamper-resistant tags are chemically or electronically linked to the ART.

If the AIM **115** is equipped or designed with a trip mechanism, then removal or separation of the AIM **115** beyond a certain distance from the ART causes a detectable change in state of the AIM **115**. Non-limiting examples of trip mechanisms include physical or electronic switches, a relay, or other closed circuit that is fastened to the object. Removal or tampering is detected by the AIM **115** emitting a signal or changing its response to an interrogation signal due to being in the tampered state.

Another example of a trip mechanism of RFID tags is an antenna wire or conductor that once attached to the object, can only be removed by breaking or destroying the antenna, thus indicating that the AIM **115** has been tampered with and may indicate a suspect piece of ART. The AIM **115** may either cease to function, or otherwise change to indicate to the interrogator that it has been tampered with. This AIM connections can be chemical adhesive to the ART, or an electronic contact switch that triggers a change to the aim when moved equivalent to a mechanical relay, an electronic, voltaic or photovoltaic bridge that once broken, cannot be reversed or even a chemically stable bond when attached, and the AIM changes due to an irreversible chemical reaction when removed from the ART.

FIG. 3C illustrates one example of a diagram key of a TA **116**. A TA **116** is an ART that includes a number, *i*, of AIMs **115**. An immutable token (“IT”) is a calculated sum of all AIMs **115** of a TA **116** and forms a Roatronic fingerprint of the TA **116**. The IT of an TA **116** is calculated and assigned by a manufacturer, assembly, and/or a supplier. The IT value is stored in a database **102** of WAAL and/or in a non-transitory machine readable storage medium of a PPL **110**. As will be understood by one of ordinary skill in the art, the IT value may be used to authenticate the ART **114** and to track the movement of the ART through a supply chain.

One example of a method of authenticating an ART **114** using an ITR **108** is described with reference to FIGS. 4A-5F. Referring first to FIG. 4A, method **400** begins at block **402** when the AAVP program is initialized on an ITR **108**. FIG. 5A illustrates one example of a home screen of the AAVP displayed to a user of an ITR **108**, which takes the form of a tablet or smart phone **140**. In some embodiments, the AAVP is executed by a processor of a stationary ITR **108** such as a computer or kiosk. As understood by one of ordinary skill in the art, processor **142** executes the AAVP and causes a home screen graphical user interface (“GUI”) to be displayed to a user on display **170**. A plurality of virtual icons **180** are presented to a user on display **170**. In some embodiments, icons **180** provide a user with various options such as, for example, perform a check (“Check”), access a report (“Report”), win items (“Win”), review authenticated items (“My Stuff”), go to website (“Website”), access social network interface “Social Networks”), help (“Help”), adjust settings (“Settings”), access information or alerts (“Info/ Alerts”), and close the program (“Close”).

If a user selects the Check icon, then the AAVP prompts the user to perform one or more data acquisition processes at block **404**. For example and referring to FIG. 5B, a message is displayed to a user on display **170** requesting the user to perform a first data acquisition process, such as scan an RFID tag of a TA **114**.

At block **406**, the first data acquisition process is performed. In some embodiments, one data acquisition process is performed in response to a user input, such as a user contacting a graphical icon **182** that triggers ITR **108** to

perform the first data acquisition process. In embodiments in which the first data acquisition process is an RFID scan, an RFID reader **154, 156** of ITR **108** emits a trigger signal to interrogate an RFID tag affixed to the ART. In some embodiments, the trigger signal is a high frequency signal, e.g., 3-30 MHz, and/or an ultra-high frequency signal, e.g., 300 MHz-3 GHz. In response to the trigger signal, RFID reader(s) **154, 156** receive a signal from an RFID tag, which includes the tag ID (“TID”) of the tag. The TID is stored in a memory **144, 146** such that the TID is associated with a data file of the ART being authenticated.

FIGS. **5C** and **5D** illustrate another example of a data acquisition process that may be performed at blocks **404** and **406**. Referring first to FIG. **5C**, a GUI is displayed on display **170** prompting a user to scan a barcode. A user tap the “Scan” button, which engages the camera **160**. As shown in FIG. **5D**, display **170** shows projects the image acquired by the camera **160** such that the user can line up the barcode, which is then scanned by ITR **108**.

Each data acquisition process is used to create a profile for the object to confirm that the object is ART. As illustrated in FIG. **5E**, display **170** presents a GUI to a user that includes a checklist of possible data acquisition processes that can be formed to collect data for authenticating an object. Examples of such data acquisition processes include, but are not limited to, taking a photograph of the object, taking a photograph of identifying indicia of the object, e.g., a logo or trademark, a barcode scan, and reading an RFID tag, to list but only a few possibilities. FIG. **5F** illustrates the checklist having been updated to include a photograph of the object along with the barcode.

In some embodiments, multiple photographs are acquired of various aspects of an object to authenticate an object. For example, if the object being authenticated is apparel, the objects profile stored by WAAL **102** may include numerous parameters that are to be checked for authenticity. Taking a shirt as an example, an authentic version of the shirt may include an RFID tag, a hangtag including a barcode that is looped through a particular buttonhole of the shirt, a company logo or emblem, and a particular type of collar. Consequently, a user of the ITR **108** may be prompted to acquire an image of each of these particular features for comparison by the AAVP and WAAL **102**.

In some embodiments, multiple RFID or other scans are used to authenticate an item. For example, a consumer electronics product or OEM assembly for a government entity (e.g., the Department of Defense (“DOD”)) typically includes multiple OEM components that can each be interrogated. If the electronic device includes a wireless access chip and a Bluetooth chip, ITR **108** can pair with the electronic device to acquire the Bluetooth ID and a MAC address of the wireless access chip can be acquired by the ITR **108**. The Bluetooth ID and MAC address of the wireless access chip are used by the AAVP and WAAL **102** for authentication as described in greater detail below.

In some embodiments, a combination of scans and photographs are used for authenticating an item. For example, a pharmaceutical package may be secured with a tamper-proof (resistant) RFID tag and including a content label comprising a barcode. The content label may include a logo, lot number, expiration date, and/or a manufacturer’s list of compounds or ingredients. In some embodiments, the container, which may be a plastic bottle or other suitable pharmaceutical container, is also embossed with a lot number.

ITR **108** interrogates the RFID tag using an RFID reader (e.g., wave reader **122** or RFID readers **154, 156**) and

acquires one or more images of the label and pharmaceutical package using camera **160**. In some embodiments, the AAVP includes an optical character recognition (“OCR”) program for extracting data from the one or more images acquired by camera **160**. For example, the lot number, expiration date, and/or list of compounds or ingredients can be recognized from the one or more images acquired by camera **160** of ITR **108**.

Referring again to FIG. **4A**, processor **142** executes AAVP and calculates an IT value for the ART at block **408** based on the AIM values collected during the data acquisition. In some embodiments, the IT calculation includes applying weights to data values. For example, an image may be weighted less than a weight of an RFID tag or barcode value since a counterfeit object may have a similar if not identical appearance to an authentic object. The Raotronic fingerprint, i.e., calculated IT value, is calculated based on several factors including, but not limited to, the number of AIMs **115**, types of AIMs **115**, accuracy of AIMs, number of records, and number weighting factors. Increasing the number of factors that are taken into consideration increases the strength of the authentication while preventing false negatives as described above.

The following provides one example of an authentication calculation for a shirt, which has a profile identifying a total of 370 possible points, with 200 points provided for a match of a TID of an RFID tag, a barcode match providing 50 points, a color match providing 25 points, a size match providing 20 points, and a lot and cut match providing 75 points. If data acquisition processes are performed on a shirt such that 300 of the possible 370 points are identified (e.g., 200 points for the TID matching, 25 points for the color match, and 75 points for the lot and cut match), then the IT value is 300 or 0.811 percent of a match.

Referring again to the pharmaceutical container example described above, the IT calculation is based on the expiration data, the RFID tag ID, which is weighted five times as much that the expiration data, the lot number bar code, which is weighted twice as much as the expiration data. The visual (e.g., optical) comparison of the company logo may be given a weight of twice that of the expiration data. Out of a possible 100 percent match, the data acquisition processes may identify a 90 percent of the possible values based on a horizontal confidence. Based on a population of several thousands of bottles in the lot, the value is strengthened by five percent to 95 percent. If a manufacturer had been alerted that the lot number had been compromised, then the value may be lowered to 85 percent.

At block **410**, the IT value calculated by ITR **108** (and other data in some embodiments) is transmitted to a WAAL **102** and/or to a PPL **110**. The calculated IT value can be transmitted to WAAL **102** and/or to one or more PPLs **110** via network **112**. In some embodiments, the message transmitting the calculated IT value is encrypted prior to transmission.

The process performed by WAAL **102** in response to receiving the message and the calculated IT value from ITR **108** is described with reference to FIG. **4B**, which is a flow diagram of one example of an authentication method **430** performed by WAAL **102**. At block **432**, WAAL **102** receives the message including the calculated IT value. In some embodiments, the message including the calculated IT value is received directly from ITR **108** via network **114**, and, in some embodiments, WAAL **102** receives the calculated IT value from a PPL **110**, which forwards the calculated IT value in the event PPL **110** was not able to confirm

the authenticity of the object based on the calculated IT value as described in greater detail below with respect to FIG. 4C.

At block 434, the calculated ITR value (and other data, if applicable) is extracted from the message and compared to IT values stored in database 104. In some embodiments, WAAL 102 hashes the ITR value and compares the hash key to a hashing table to determine if the calculated IT value resides in memory. In some embodiments, WAAL 102 performs a straight comparison of the calculated value to the stored IT values.

At block 436, WAAL 102 transmits a message to ITR 108 that confirms the authentication of the object as being an ART 114, identifies the object as not being ART 114, requests additional information, and/or identifies a probability that the item is authentic or counterfeit. In some embodiments, the message transmitted directly from WAAL 102 to ITR 108 via network 114. In some embodiments, such as embodiments in which WAAL 102 receives the message from ITR 108 via a PPL 110, WAAL 102 transmits a message destined for ITR 108 to PPL 110 with instructions to forward the message to ITR 108.

If the calculated IT value received from ITR 108 matches a value stored in database 104 or varies from a value stored within database 104 within a first predetermined error range, then WAAL 102 transmits a message identifying that the object interrogated by ITR 108 is ART 114. If the IT value does not match an IT value in database 104 and is outside the first predetermined range, but within a second predetermined range, then the message transmitted from WAAL 102 requests ITR 108 provide additional data and/or recalculate the IT value before WAAL 102 will authenticate the object as ART 114. If the calculated IT value received from ITR 108 does not match an IT value in database 104 and is outside of the second predetermined range, then the message transmitted from WAAL 102 to ITR 108 identifies the object as not being ART 114. As will be understood by one of ordinary skill in the art, the greater the number and strength of AIMS 115, and depending on the closeness of the match to the WAAL database 104, the higher the probability is that the object is ART 114.

Turning now to FIG. 4C, which is a flow diagram of an authentication method 450 performed by a PPL 110, PPL 110 receives a message including the calculated IT value from ITR 108 via network 114 at block 452.

At block 454, PPL 110 extracts the calculated IT value from the message and compares the extracted IT value to values stored in a database controlled by and local to PPL 110. In some embodiments, PPL 110 hashes the ITR value received from ITR 108 and compares the hash key to a hashing table to determine if the calculated IT value resides in memory. In some embodiments, PPL 110 performs a straight comparison of the calculated IT value received from ITR 108 to stored IT values.

At decision block 456, PPL 110 determines if the calculated IT value received from ITR 108 matches an IT value within the local database or is within a first or second predetermined range of one of the stored IT values.

If the calculated IT value received from ITR 108 does not match and is not within one of the predetermined error ranges, then method 450 proceeds to block 458. At block 458, PPL 110 transmits a message including the calculated IT value received from ITR 108 to WAAL 102, which performs the authentication check method 430 described above with respect to FIG. 4B. PPL transmits the message to WAAL 102 such that WAAL 102 can perform a secondary

check of the calculated IT value using WAAL's database 104, which is larger than a database retained by PPL 110.

At block 460, PPL 110 receives message from WAAL 102. In some embodiments, the message received from WAAL 102 includes a copy of an IT value and the associated data of ART 114 if WAAL 102 was able to identify a match (or a suitable match within a predetermined error range) to the calculated IT value received from ITR 108. PPL 110 extracts the data included in the message from WAAL 102 and updates its associated database. In some embodiments, the message received from WAAL 102 identifies that WAAL 102 was not able to identify an identical or suitable match (i.e., a match within a predetermined range).

At block 462, PPL 110 transmits a message to ITR 108 via network 114. If the calculated IT value received from ITR 108 matched or was a suitable match (i.e., is within a first predetermined range of an IT value) as determined by PPL 110 or by WAAL 102, then PPL 110 transmits a message to ITR 108 identifying that the interrogated object is an ART 114. If the calculated IT value received from ITR 108 does not match an IT value and is not within the first predetermined range, but is within a second predetermined range as determined by PPL 110 or WAAL 102, then PPL 110 transmits a message to ITR 108 requesting additional data and/or requesting ITR 108 to recalculate the IT value. If the calculated IT value received from ITR 108 does not match an IT value and is outside of the second predetermined range as determined by PPL 110 or WAAL 102, then the message transmitted from PPL 110 to ITR 108 identifies the object as not being ART 114.

Referring again to FIG. 4A, ITR 108 receives a message from WAAL 102 or PPL 110 and determines if additional data acquisition is needed at decision block 414. ITR 108 determines if additional data acquisitions processes should be performed based on the message received from WAAL 102 or PPL 110. If additional data acquisition is needed, then ITR 108 proceeds to block 404 where a user is prompted to performed one or more data acquisition processes. As described above, additional data acquisition may be needed if WAAL 102 and/or PPL 110 cannot definitively determine if the calculated IT value corresponds to a stored IT value. For example, if the calculated value does not exactly or suitably match a stored IT value, but is with the second predetermined range of values, then additional data acquisition processes should be performed.

A notification that additional data acquisition is required to authenticate the object can be provided to the user. For example, display 170 can generate a message requesting additional data acquisition. In some embodiments, LEDs 152 can generate a predetermined color, e.g., a yellow light, which indicates that additional data acquisition is needed before the object can be authenticated. Speaker 174 and/or oscillator 176 can also generate notifications to a user. For example, speaker 174 may emit multiple beeps or tones or play a message requesting additional data acquisition steps be performed. Oscillator 176 may provide a series of short or long pulses, which indicates that additional data steps are needed before the object can be authenticated as ART/TA. One of ordinary skill in the art will understand that the notifications are not exclusive of one another and each can be simultaneously generated. In some embodiments, the AAVP enables a user to customize the types of notifications he/her would like to receive, e.g., audible, tactile, and/or visual.

If additional data acquisition is not needed, then ITR 108 moves to decision block 416 to determine if the interrogated object is ART 114. In some embodiments, the decision at

block **416** is based on the message received from WAAL **102** or PPL **110**. If the object is determined to be ART **114**, then ITR **108** moves to block **418** and generates one or more notifications to a user on display **170** identifying that the object is ART. For example, display **170** can generate a message identifying the object as ART/TA. In some embodiments, LED(s) **152** emit a light, such as a green light, signifying that the object is ART/TA. Speaker **174** can emit a sound indicating the object is ART/TA and/or oscillator **176** can generate a series of pulses signifying that the object is authentic.

If the object is determined to not be ART **114**, then ITR **108** moves to block **420** and generates one or more notifications to a user on display **170** identifying that the object is not ART. Visual, audible, and/or tactile notifications can be generated by one or more of LED(s) **152**, display **170**, speaker **174**, and/or oscillator **176**. For example, LED(s) **152** can be configured to generate a red light and display can be configured to generate a message conveying that the object is not authentic. Speaker **174** can be configured to emit a noise or message, and oscillator **176** can be configured to provide one or more pulses that identify the object as not being authentic.

WAAL **102** can also be used to authenticate goods purchased via an online retailer or reseller. One example of such an authentication method is described with reference to FIGS. **6A-6B**, which are flow diagrams of one example of such a method. Referring first to FIG. **6A**, an online marketer **119**, such as a distributor or auction house, receives a request from a purchaser for the marketed object to be authenticated at block **602**.

At block **604**, online marketer **119** transmits a message to the seller requesting the AIM values or other authentication credentials. The message transmitted to seller can request various AIMs including, but not limited, the serial number and product number, which may be obtained from one or more barcodes, the location from which the object was procured, where the object currently resides, the NFC data if the object includes an NFC tag, and one or more multi-dimension photos or videos of the object, to provide only a few non-limiting examples.

At block **606**, online marketer **119** receives one or more AIMs from the seller in response to the transmitted request. In some embodiments, online marketer **119** calculates an IT value for the object based on the AIMs received from seller. In some embodiments, online marketer **119** stores the AIM values received from seller without calculating an IT value.

At block **608**, online marketer **119** transmits an authentication request to WAAL **102** or to PPL **110**. In some embodiments, the authentication request message transmitted to WAAL **102** includes an IT value calculated by online retailer **119**, and in some embodiments, the authentication request message transmitted to WAAL **102** includes the AIM values received from the seller.

Referring now to FIG. **6B**, which is a flow diagram of one example of an authentication method performed by WAAL **102**, WAAL **102** receives the authentication request message at block **632**. In some embodiments, the authentication request message received from online marketer **119** is received via network **114** in accordance with the API of WAAL **102**.

At decision block **634**, WAAL **102** parses the received message and determines if the message includes a calculated IT value. If the message does not include an IT value, then method **630** moves to block **636** where WAAL **102** calculates an IT value from the AIM values provided in the message received from online retailer **119**.

At block **638**, with an IT value having been calculated either by online retailer **119** or by WAAL **102**, WAAL **102** compares the calculated IT value to IT values stored in database **104**. In some embodiments, the comparison at block **638** includes hashing the calculated IT value and comparing the hash key to a hash table stored in database **104**. In some embodiments, WAAL **102** performs a straight comparison of the calculated IT value to the stored IT values.

At block **640**, WAAL **102** transmits a message to online retailer **119** that confirms the authentication of the object as an ART **114**, identifies the object as not being ART **114**, or requests additional information. For example, if the calculated IT value matches a value stored in database **104** or is within a suitable range of values stored as an authenticity defining criterion (i.e., is within a first predetermined range), then WAAL **102** transmits a message identifying that the object is ART **114**. If the calculated IT value does not match an IT value in database **104** and is outside the first predetermined range, but within a second predetermined range, then the message transmitted from WAAL **102** to online retailer **119** requests additional data. If the calculated IT value does not match an IT value in database **104** and is outside of the second predetermined range, then the message transmitted from WAAL **102** to online retailer identifies the object as not being ART **114**.

Turning back to FIG. **6A**, online retailer **119** receives the authentication message from WAAL **102** at block **610**. As described above, the authentication message received from WAAL **102** includes a determination of whether the object is ART **114**, the object is not ART **114**, or additional information is needed by WAAL **102** before WAAL **102** can authenticate the object.

At decision block **612**, online retailer **119** determines whether additional information is needed before the object can be authenticated. If the message received from WAAL **102** identifies that additional information is needed (i.e., the calculated IT value was outside of the first predetermined range, but within the second predetermined range), then method **600** moves to block **604** and requests the seller to provide additional information about the object.

If the message received from WAAL **102** identifies that additional information is not needed (i.e., the calculated IT value was within the first predetermined range or outside the second predetermined range), then method **600** moves to decision block **614** to determine if the object has been authenticated, i.e., if the object is ART **114**.

If the message received from WAAL **102** identifies the object as being ART **114**, then online retailer **119** transmits a message to the prospective buyer at block **616** that notifies the buyer that the object cannot be authenticated and is ART. In some embodiments, the message transmitted to the prospective buyer at block **616** includes a certificate of authentication that includes embedded links to a website or portal maintained by WAAL **102** that enables the prospective buyer to access the profile of the object that has been identified as ART **114**. The ART profile can include AIM data including, but not limited to, the name of the vendor, date of certification, certification product details and a description of the product.

If the message received from WAAL **102** identifies the object as not being ART **114**, then online retailer **119** transmits a message to the prospective buyer at block **618** that notifies the buyer that the object can be authenticated, but that it is not ART.

The systems and methods described above can also be used to assess risk for large assemblies in which authenti-

cation is critical such as assemblies for national defense (e.g., cars, trucks, drones, fighter planes, self-guided munitions, etc.). For example and referring to FIG. 7, the AAVP can be configured to present graphics to a user on a display 124, 170 that identifies the likelihood of authentication and the associated risk. The amount of risk associated with a certain authenticity percentage may be configured by a particular entity, e.g., government, defense contractor, etc.

The AAVP generates the graphics illustrated in FIG. 7 after performing numerous data acquisition processes on one or more components of the assembly. Interrogating the components in a supply chain or a finished assembly provides an increased assurance that the goods are authentic and have not been tampered.

The systems and methods described above advantageously enable objects to be identified using various data. The WAAL, a central repository of authentication information, is able to be accessed via networks such that individual users and organizations can access the database. By providing data that can be used for authentication, brand name owners and manufacturers can track goods through supply chains as well as ensure that the ultimate purchasers are receiving authentic goods.

The present invention can be embodied in the form of methods and apparatus for practicing those methods. The present invention can also be embodied in the form of program code embodied in tangible media, such as secure digital (“SD”) cards, USB flash drives, diskettes, CD-ROMs, DVD-ROMs, Blu-ray disks, hard drives, or any other non-transitory machine-readable storage medium, wherein, when the program code is loaded into and executed by a machine, such as a computer, the machine becomes an apparatus for practicing the invention. The present invention can also be embodied in the form of program code, for example, whether stored in a storage medium, loaded into and/or executed by a machine, or transmitted over some transmission medium, such as over electrical wiring or cabling, through fiber optics, or via electromagnetic radiation, wherein, when the program code is loaded into and executed by a machine, such as a computer, the machine becomes an apparatus for practicing the invention. When implemented on a general-purpose processor, the program code segments combine with the processor to provide a unique device that operates analogously to specific logic circuits.

Although the invention has been described in terms of exemplary embodiments, it is not limited thereto. Rather, the appended claims should be construed broadly, to include other variants and embodiments of the invention, which may be made by those skilled in the art without departing from the scope and range of equivalents of the invention.

What is claimed is:

1. A system, comprising:

a first computing device, the first computing device including:

a first non-transitory machine-readable storage medium;

first communication circuitry; and

at least one first processor in communication with the first non-transitory machine-readable storage medium and the first communication circuitry, the at least one first processor configured to execute instructions stored in the first non-transitory machine-readable storage medium to:

cause the first communication circuitry to receive a first signal from a first transmission medium, the first signal including data on at least two object attributes characterizing an object;

calculate a first authentication value for the object based on the data on at least two object attributes characterizing the object included in the first signal, the calculation including application of weights to the data; and

cause the first communication circuitry to transmit a second signal to the first transmission medium, the second signal identifying whether the object is authentic based, at least in part, on the first authentication value.

2. The system of claim 1, wherein the authentication value is based, at least partially, on a number of sensors used to acquire the data included in the first signal.

3. The system of claim 2, wherein a reliability of the authentication value is based, at least in part, on the number of sensors used to acquire the data.

4. The system of claim 1, wherein the authentication value includes a unique identifying code.

5. The system of claim 1, further comprising:

a second computing device communicatively coupled to the first computing device via the first transmission medium, the second computing device including:

a second non-transitory machine-readable storage medium;

second communication circuitry;

a plurality of sensors; and

at least one second processor in communication with the second non-transitory machine-readable storage medium, the second communication circuitry, and the plurality of sensors, the at least one second processor configured to execute instructions stored in the second non-transitory machine-readable storage medium to:

cause at least a subset of the plurality of sensors to acquire the data on at least two object attributes characterizing the object;

cause the second communication circuitry to transmit the first signal to the first computing device.

6. The system of claim 5, wherein the at least one second processor is configured to execute instructions to cause the second communication circuitry to receive the second signal.

7. The system of claim 5, wherein at least one sensor of the plurality of sensors comprises a user input device.

8. The system of claim 7, wherein the user input device comprises a touch screen or keys.

9. The system of claim 1, wherein the data on at least two object attributes characterizing the object includes at least one of a serial number or a product number of the object.

10. The system of claim 1, wherein the at least one first processor is configured to perform a comparison of the first authentication value for the object to a second authentication value for the object; and

determine if the object is authentic based on the comparison.

11. The system of claim 10, further comprising:

a library computing device communicatively coupled to the first computing device via the first transmission medium, the library computing device including:

a library non-transitory machine-readable storage medium;

library communication circuitry configured to communicate through the first transmission medium; and

17

at least one library processor in communication with the library non-transitory machine-readable storage medium, and the library communication circuitry, the at least one library processor configured to execute instructions stored in the library non-transitory machine-readable storage medium to:

receive a request from the first computing device through the library communication circuitry; determine the second authentication value; and send the second authentication value to the first computing device through the library communication circuitry.

12. The system of claim 11, further comprising a database, and wherein the at least one library processor is configured to determine the second authentication value based, at least in part, on a value retrieved from the database.

13. The system of claim 1, further comprising:

a library computing device communicatively coupled to the first computing device via the first transmission medium, the library computing device including:  
a library non-transitory machine-readable storage medium;

library communication circuitry configured to communicate through the first transmission medium; and  
at least one library processor in communication with the library non-transitory machine-readable storage medium, and the library communication circuitry, the at least one library processor configured to execute instructions stored in the library non-transitory machine-readable storage medium to:

receive the first authentication value for the object from the first computing device through the library communication circuitry;

perform a comparison of the first authentication value for the object to a second authentication value for the object;

determine if the object is authentic based on the comparison; and

send the first computing device an authenticity determination through the library communication circuitry.

14. The system of claim 13, wherein the library computing device is communicatively coupled to a database, and wherein the at least one library processor is configured to retrieve the second authentication value from the database.

15. The system of claim 14, wherein the library computing device is further configured to update the database based on data received from the first computing device.

16. The system of claim 1, wherein the data on at least two object attributes characterizing the object comprises data collected by a single sensor on at least two object attributes characterizing the object.

17. The system of claim 16, wherein the data collected by the single sensor comprises data collected by the single sensor during a single data acquisition process.

18. The system of claim 16, further comprising:

a second computing device communicatively coupled to the first computing device via the first transmission medium, the second computing device including:

a second non-transitory machine-readable storage medium;

second communication circuitry;  
the single sensor; and

at least one second processor in communication with the second non-transitory machine-readable storage medium, the second communication circuitry, and the single sensor, the at least one second processor

18

configured to execute instructions stored in the second non-transitory machine-readable storage medium to:

cause the single sensor to acquire the data on at least two object attributes characterizing the object; and  
cause the second communication circuitry to transmit the first signal to the first computing device.

19. The system of claim 1, wherein the data on at least two object attributes characterizing the object comprises data input by a user.

20. The system of claim 19, wherein the data input by the user comprises data input by the user in response to a query.

21. The system of claim 19, further comprising:

a second computing device communicatively coupled to the first computing device via the first transmission medium, the second computing device including:

a second non-transitory machine-readable storage medium;

second communication circuitry;

a user input device; and

at least one second processor in communication with the second non-transitory machine-readable storage medium, the second communication circuitry, and the input device, the at least one second processor configured to execute instructions stored in the second non-transitory machine-readable storage medium to:

acquire data on at least two object attributes characterizing the object, wherein data on at least one object attribute is input by a user through the user input device; and

cause the second communication circuitry to transmit the first signal to the first computing device.

22. The system of claim 21, wherein the user input device comprises a touch screen or keys.

23. The system of claim 21, wherein the at least one second processor is further configured to execute instructions stored in the second non-transitory machine-readable storage medium to display a query, and wherein data on at least one object attribute is input by the user through the user input device in response to the query.

24. The system of claim 23, wherein the at least one second processor is further configured to execute instructions stored in the second non-transitory machine-readable storage medium to receive the query through the second communication circuitry.

25. The method of claim 1, wherein the weights applied to the data comprise a weight applied to an object attribute, wherein the weight applied to the object attribute is based on a likelihood that the object attribute can be forged or counterfeited.

26. The method of claim 1, wherein the weights applied to the data comprise a weight applied to an object attribute, wherein the weight applied to the object attribute is based on a degree of certainty that the object attribute indicates authenticity of the object.

27. The method of claim 26, wherein the degree of certainty of an attribute that is primarily machine readable is higher than a degree of certainty of an attribute indicating a physical appearance of an object.

28. The method of claim 27, wherein an attribute that is primarily machine readable includes an attribute selected from a group consisting of an RFID reading, a barcode reading, a QR code reading, a transponder identification number reading, a Bluetooth ID reading, and a MAC address reading.

19

29. The method of claim 27, wherein an attribute indicating a physical appearance of an object is selected from a group consisting of a color, a size, a visible logo, a position of a visible logo, a cut, a human-readable lot number, and a human-readable expiration date.

30. The method of claim 1, wherein the weights applied to the data comprise a plurality of weights applied to a plurality of object attributes selected from a group consisting of an RFID tag reading, a product serial number, a transponder identification number, a doping agent, a barcodes, a QR codes, an marking in an invisible ink, a software key, a certificate of authenticity, a color, a sound, and combinations thereof.

31. The system of claim 1, wherein at least one of the object attributes characterizing an object is based on a sensor reading from a sensor selected from a group consisting of a nuclear magnetic resonance (NMR) sensor, a near-field optical sensor, a thermal temperature sensor, an ultrasound sensor, a laser-based sensor, a near-field communication (NFC) reader, an RFID reader, an optical sensor, a camera, an audio sensor, a microphone, and a spectroscopic sensor.

32. The system of claim 1, wherein at least one of the object attributes characterizing an object is based on a sensor reading from a sensor selected from a group consisting of a nuclear magnetic resonance (NMR) sensor, a near-field optical sensor, a thermal temperature sensor, an ultrasound sensor, a laser-based sensor, a near-field communication (NFC) reader, an RFID reader, an optical sensor, a camera, an audio sensor, a microphone, a spectroscopic sensor, a keypad, a keyboard, keys, a touch screen, and a user input device.

33. A method, comprising:

receiving, by a first communications module, a first signal from a first transmission medium, the first signal including data on at least two object attributes characterizing an object;

applying weights to the data characterizing the object;

calculating, using at least one first processor, a first authentication value for the object based on the data on at least two object attributes characterizing the object; and

transmitting, by the first communications module, a second signal to the first transmission medium, the second signal identifying whether the object is authentic based, at least in part, on the first authentication value.

34. The method of claim 33, wherein the data on at least two object attributes characterizing the object includes data obtained from at least a subset of a plurality of sensors.

35. The method of claim 34, wherein the authentication value is based, at least partially, on a number of sensors used to acquire the data included in the first signal.

36. The method of claim 35, wherein a reliability of the authentication value is based, at least partially, on a number of sensors used to acquire the data included in the first signal.

37. The method of claim 33, further comprising:

loading, from a non-transitory machine-readable storage medium, a second authentication value;

comparing, using the at least one first processor, the first authentication value to the second authentication value; and

determining, using the at least one first processor, if the object is authentic based on the comparing.

20

38. The method of claim 33, further comprising:  
sending the first authentication value to a library system;  
receiving from the library system an authenticity determination for the object, the authenticity determination based, at least in part, on the first authentication value;  
and

determining the second signal based on the authenticity determination.

39. The method of claim 33, wherein the data on at least two object attributes characterizing the object comprises data on at least two object attributes obtained by a single sensor.

40. The method of claim 39, wherein the data on at least two object attributes obtained by a single sensor comprises data on at least two object attributes obtained by the single sensor during a single data acquisition process.

41. The method of claim 33, wherein the data on at least two object attributes characterizing the object comprises data on at least one object attribute input by a user.

42. The method of claim 33, wherein applying weights to the data characterizing the object comprises applying a weight to an object attribute based on a degree of certainty that the object attribute indicates authenticity of the object.

43. The method of claim 42, wherein the degree of certainty of an attribute that is primarily machine readable is higher than a degree of certainty of an attribute indicating a physical appearance of an object.

44. The method of claim 33, wherein applying weights to the data characterizing the object comprises applying weights to a plurality of object attributes selected from a group consisting of an RFID tag reading, a product serial number, a transponder identification number, a doping agent, a barcodes, a QR codes, an marking in an invisible ink, a software key, a certificate of authenticity, a color, a sound, and combinations thereof.

45. A system, comprising:

a first computing device, the first computing device including:

a first non-transitory machine-readable storage medium;  
first communication circuitry; and

at least one first processor in communication with the first non-transitory machine-readable storage medium and the first communication circuitry, the at least one first processor configured to execute instructions stored in the first non-transitory machine-readable storage medium to:

cause the first communication circuitry to receive a first signal from a first transmission medium, the first signal including at least two sensor readings characterizing an object;

calculate a first authentication value for the object, the first authentication value for the object being at least partially based on a function of the at least two sensor readings;

wherein the calculation includes application of weights to the at least two sensors reading; and

cause the first communication circuitry to transmit a second signal to the first transmission medium, the second signal identifying whether the object is authentic based, at least in part, on the first authentication value.

46. The system of claim 45, wherein the function of the at least two sensor readings comprises applying weights to the at least two sensor readings.

47. The system of claim 46, wherein a weight applied to a sensor reading comprises a weight based on a degree of certainty that the sensor reading indicates authenticity of the object.



21

48. The system of claim 47, wherein the degree of certainty of a sensor reading of an attribute that is primarily machine readable is higher than a degree of certainty of a sensor reading of an attribute indicating a physical appearance of an object.

49. The system of claim 45, further comprising a library computing device communicatively coupled to the first computing device via the first transmission medium, the library computing device including:

a library non-transitory machine-readable storage medium;

library communication circuitry configured to communicate through the first transmission medium; and at least one library processor in communication with the library non-transitory machine-readable storage medium, and the library communication circuitry, the at least one library processor configured to execute instructions stored in the library non-transitory machine-readable storage medium to:

receive the first authentication value from the first computing device through the library communication circuitry;

perform a comparison of the first authentication value to a second authentication value for the object;

determine if the object is authentic based on the comparison; and

send the first computing device an authenticity determination through the library communication circuitry.

50. The system of claim 49, wherein the library computing device is communicatively coupled to a database, and wherein the at least one library processor is configured to retrieve the second authentication value from the database.

51. The system of claim 50, wherein the library computing device is further configured to update the database based on data received from the first computing device.

52. The system of claim 45, wherein the at least one first processor is configured to:

perform a comparison of the first authentication value to a second authentication value for the object; and

determine if the object is authentic based on the comparison.

53. The system of claim 52, further comprising a database communicatively coupled to the first computing device, and wherein the second authentication value is based, at least in part, on data retrieved from the database.

22

54. The system of claim 52, further comprising: a library computing device communicatively coupled to the first computing device via the first transmission medium, the library computing device including:

a library non-transitory machine-readable storage medium;

library communication circuitry configured to communicate through the first transmission medium; and

at least one library processor in communication with the library non-transitory machine-readable storage medium, and the library communication circuitry, the at least one library processor configured to execute instructions stored in the library non-transitory machine-readable storage medium to:

receive a request from the first computing device through the library communication circuitry;

determine the second authentication value; and

send the second authentication value to the first computing device through the library communication circuitry.

55. The system of claim 54, further comprising a database, and wherein the at least one library processor is configured to determine the second authentication value based, at least in part, on data retrieved from the database.

56. The system of claim 45, wherein the at least two sensor readings characterizing an object comprise at least two sensor readings obtained by a single sensor.

57. The system of claim 56, wherein the at least two sensor readings obtained by a single sensor comprise at least two sensor readings obtained by the single sensor during a single data acquisition process.

58. The system of claim 45, wherein the at least two sensor readings characterizing an object comprise at least one reading from a user input device.

59. The system of claim 58, wherein the user input device comprises a touch screen or keys.

60. The system of claim 45, wherein the function of the at least two sensor readings is based, at least in part, on a number of sensors used to acquire data included in the first signal.

61. The system of claim 45, wherein a number of sensors used to acquire the data included in the first signal is used as an input to the function.

\* \* \* \* \*